

# soluCLEAN

Sustainably Derived



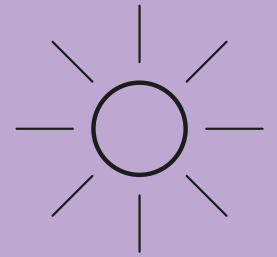
# Our vision

We aim to lead the commercial and professional cleaning industry with high quality cleaning products, that are good for both us and the planet. Our aim is to conserve the planet's natural resources and have as little impact as possible, for a maximum output. Our circular system means that single use plastic is eliminated, wastage is dramatically reduced and what is left over is compostable anyway!



**Once the sachets are diluted the product is ready to go.**

# soluCLEAN history



soluCLEAN water soluble sachets were first introduced to the marketplace around 10 years ago; the result of 25 years of Solupak product advancements. We can safely say that we have been pioneers in the new water-soluble cleaning product revolution. In addition, the entire process of research, manufacturing, producing and packing of soluCLEAN products takes place at our HQ, meaning that we are the only water soluble cleaning brand of our kind that is 100% made on British soil.

We know how sustainability and sustainable products have become key drivers in market trends over the past few years and it's so rewarding to help our customers make savings on not only money, but transport, CO2 emissions, space and time, too.

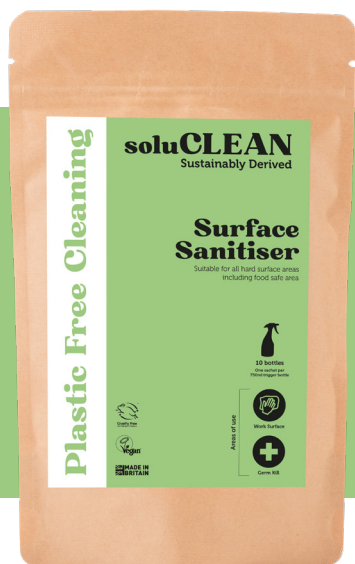


# Products and areas

The soluCLEAN range is an eco-friendly and easy to use suite of pre-dosed, concentrated surface cleaning products, encapsulated in fully water-soluble sachets. Once the sachets are diluted the product is no hazard.

Covering virtually every aspect of the everyday cleaning needs for today's demanding professionals, our range enables our customers to save money, time and waste without compromising on high standards of cleanliness and infection prevention.

## Food Safe



**Our specialist cleaners for the catering industry include everything from degreasers to floor cleaning to deliver a top of the range cleaning package.**

Independently tested to EN1276, giving a 99.9999% germ kill, our Surface Sanitiser is a versatile cleaner for use in all food areas where hygiene concerns are paramount.

## Laundry and Specialist



**Our cleaning range covers a wide spectrum of specific needs.**

Our Laundry Bio has a pleasantly fragranced formulation containing enzymes and fabricsafe bleaching agents, providing effective cleaning for heavy soiled cotton and polycotton fabrics.

## Washroom



**Keeping the hard surfaces of any washroom hygienic is easy and simple with soluCLEAN.**

Our Washroom Cleaner can be used on all washroom surfaces and leaves surfaces decontaminated, smear free and fresh smelling.

## General



**Our range of general cleaners provides effective cleaning for a variety of everyday jobs.**

Our All Purpose Cleaner is suitable for all surfaces - it dries quickly and leaves a smear free, bright finish.

## Clinical/Bespoke



**Having worked alongside manufacturers of medical devices for many years, our clinical and bespoke detergents are designed to carry out specific tasks.**

Our Hard Surface Floor Cleaner is formulated to remove daily build up of dirt and is suitable for use in food safe areas.



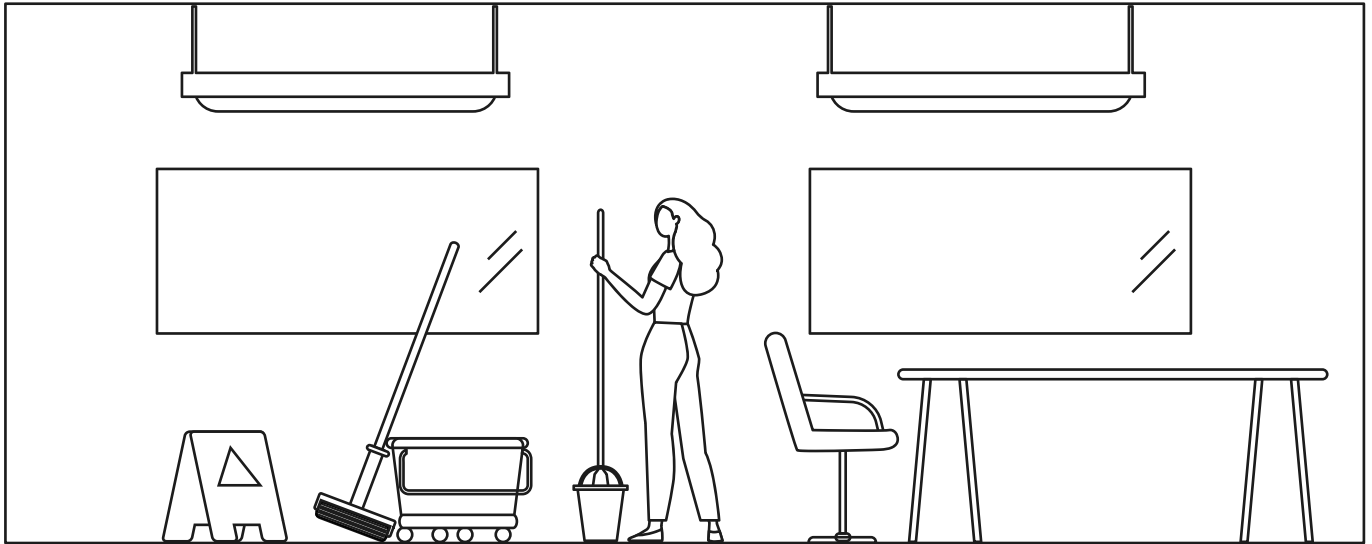
**The soluCLEAN customer base ranges in both size and sector, and we cater to all needs and requirements, no matter how big or small the cleaning cupboard may be. One customer we are particularly proud to supply is the Greggs chain, up and down the country.**

In 2014, the Head of Purchasing at Greggs approached Solupak with a challenge to deliver a new and innovative chemical dosing system that would reduce the volume of water being transported around the 2,200 shops they had at the time.

Before Solupak solved this challenge, Greggs were having to empty the local bins three times a week to remove packaging waste. Solupak products were officially introduced in 2017. This simple switch meant tonnes of plastic waste was and is saved, each and every year.

Last year alone, through switching to soluCLEAN products, Greggs saved an equivalent of 470,960 bottles from entering landfill.

**Greggs saved an equivalent of  
470,960 bottles  
from entering landfill.**



**Peartree Cleaning Services is a specialist commercial cleaning and support services business. Established in 1986, Peartree employs over 1400 fully trained, cleaning and support staff across the UK.**

The soluCLEAN product range supports Peartree's strategy and vision. Our products are manufactured in line with Peartree's sustainable supply chain strategy.

Being cost-effective is a real highlight of the soluCLEAN product range. We agreed a costs framework with Peartree to perfectly match their spending plan.

Zero waste and plastic reduction is a significant driver for Peartree and Solupak. In the first year of our partnership, Peartree lowered trigger spray bottle usage by 22,000.

Product development is in house, giving Peartree flexibility in terms of product colour, package sizing and fragrances.

Product trials were completed at key client sites in 2018 and critical feedback gathered from all stakeholders to provide a rationale for including Solupak in a commercial tender exercise.

Following the tender, Solupak supported Peartree as necessary with team presentations, product samples, site visits, H&S data, wallcharts and training materials, all of which were bespoke to the approved Peartree range of products.

During the COVID-19 pandemic, Solupak developed and tested a virucidal disinfectant that Peartree has successfully implemented across the business for both hands-on cleaning and atomised surface protection.

# Distributors

To find out who your local distributor is, or if you have any questions, please get in touch on 01924 565120 or email [sales@solupak.com](mailto:sales@solupak.com)

Wakefield	Nottingham
Hull	Plymouth
Southampton	Tyne and Wear
Aberdeen	Warrington
Birmingham	Bromborough
Bristol	Newlyn- Cornwall
Carlisle	Manchester
Castleford	Haverhill
Croydon	Swindon
Edinburgh	Rayleigh Essex
Glasgow	Braintree Essex
Norwich	Benfleet Essex
Newbury	Crawley
Langley	Motherwell
London City	Dublin



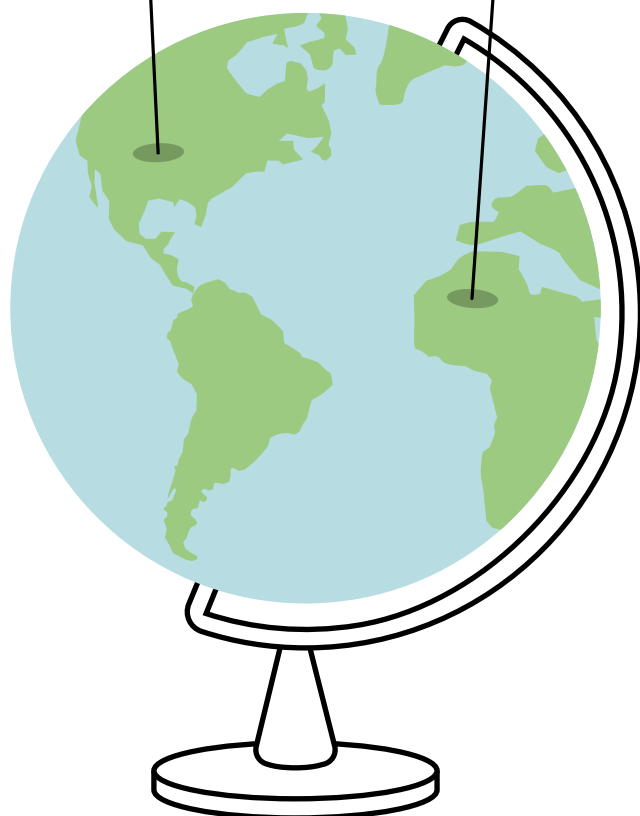


# Global Focus

Our soluCLEAN range is available through our network of partners and distributors in the UK and around the world.

We are looking to work with additional international partners who share our ethos to provide end users with high quality products and demonstrate commitment to being a responsible business.

If this sounds like your company, please get in contact to discuss how we can work together on our sustainable journey.



# Accreditations



**ISO9001**  
**ISO14001**

**Made in accordance with**

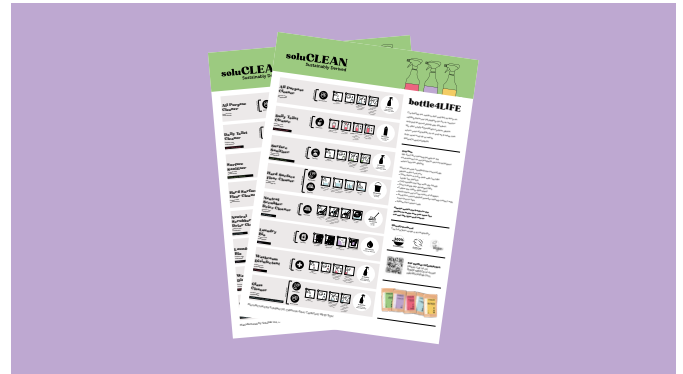


# Support materials

We also supply various support materials to help you to switch to soluCLEAN smoothly and simply.



1. Key cards

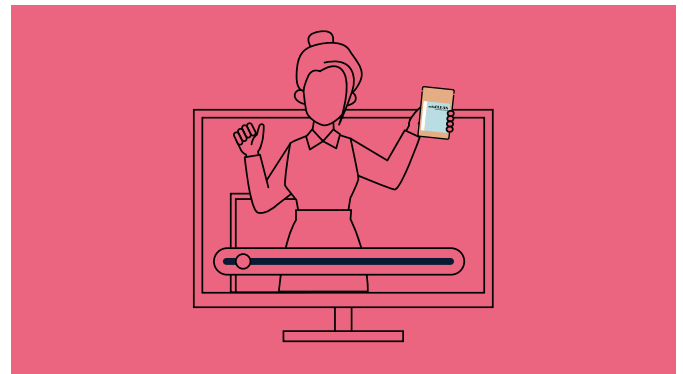


2. Wall charts



3. Animation

We have developed a new animation to summarise our products, system and benefits all in one place.



4. Training video

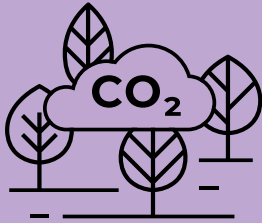


5. Face to face training available upon request

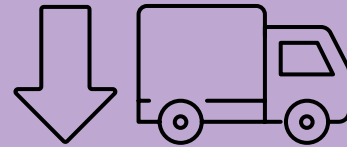


6. Branding guidelines

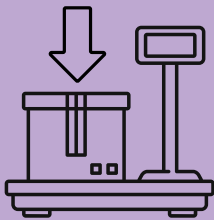
# Benefits



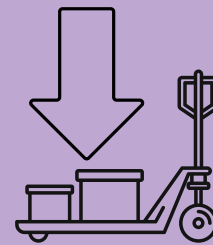
**Plastic and carbon savings**



**Reduced transport**



**Reduced storage**



**Reduced manual handling risks**



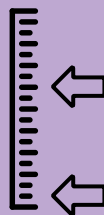
**Sustainably derived**



**No palm oil**



**Clarity on cost**



**Dosage control**





**No spill risk  
or chemical contact**


# Putting soluCLEAN products into perspective

If a company has 20 sites to look after...

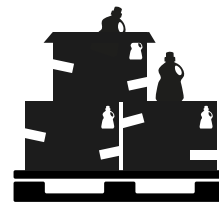
Every site uses 4 x ready to use (RTU) trigger spray, 4 x RTU toilet cleaner and 2 x 5L concentrate each month, then in **one year by switching to soluCLEAN system, each year they would save:**

**1x**  **430kg of plastic**  
(equivalent to the weight of a Fiat 500)

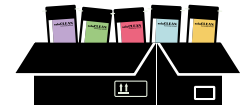
**10x**  **2.5m cubic metres of waste**  
(equivalent of 10 wheelie bins if compacted)

**3x**  **2.8 tonnes of CO2**  
(the equivalent volume of 3 houses)

**Given that we don't ship water,** and it is only added when the product arrives at the customer's site, the frequency of deliveries is dramatically reduced.



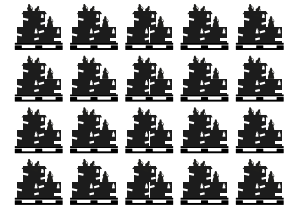
**3x**



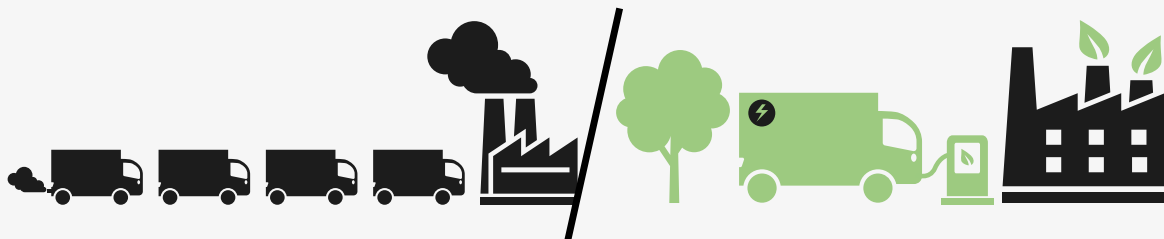
**1 pallet of RTU = 3 cases of soluCLEAN**



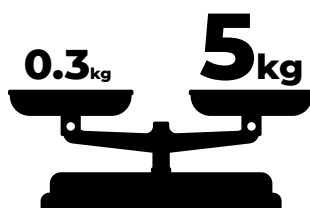
**6x**



**1 pallet of soluCLEAN = 30 pallets of RTU**



The cost of transportation is rising. We can reduce the frequency of delivery drops you require and even transport a year's supply in one delivery, in some cases. This means that your carbon footprint is reduced and your costs are too!



**Would you rather use soluCLEAN floor cleaner or a ready to use concentrate?**

Risk with manual handling is a frequent problem - would you rather use soluCLEAN floor cleaner or a ready to use concentrate? One weighs 0.3kg and one weighs 5kg. One eliminates manual handling risks, one creates the risks.



**Solupak Limited**

California Drive, Castleford, West Yorkshire,  
WF10 5QH, United Kingdom

**[www.solupak.com](http://www.solupak.com)**



For any further technical information or queries  
please telephone **01924 565120** or email **[sales@solupak.com](mailto:sales@solupak.com)**